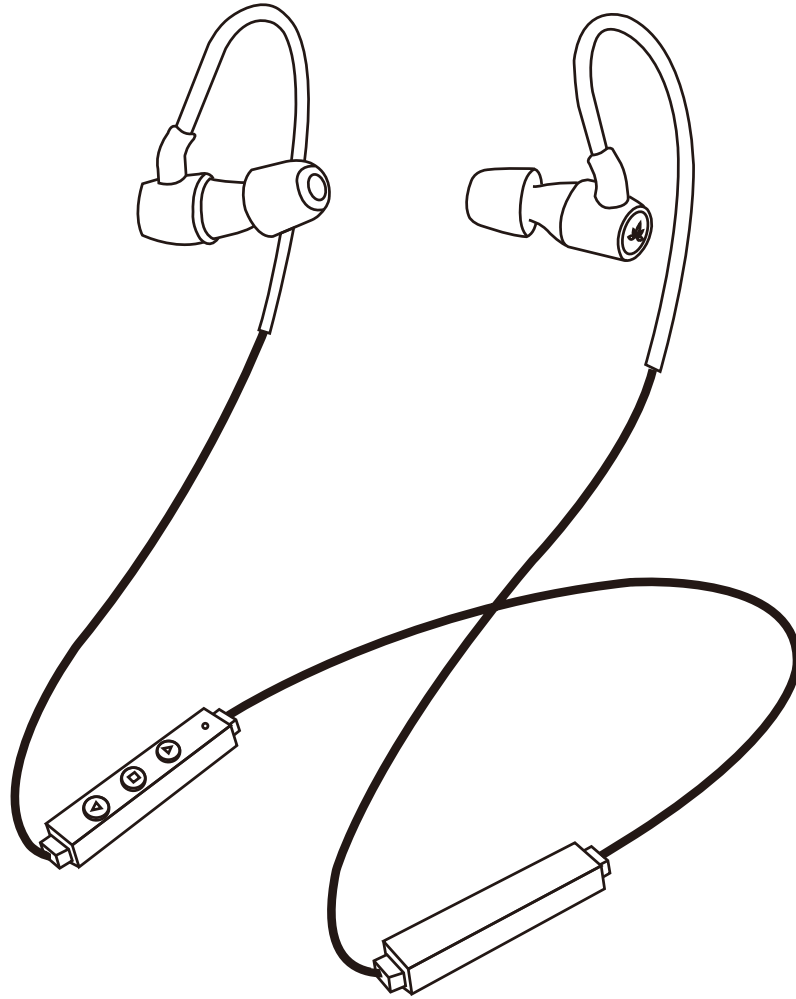


User Manual

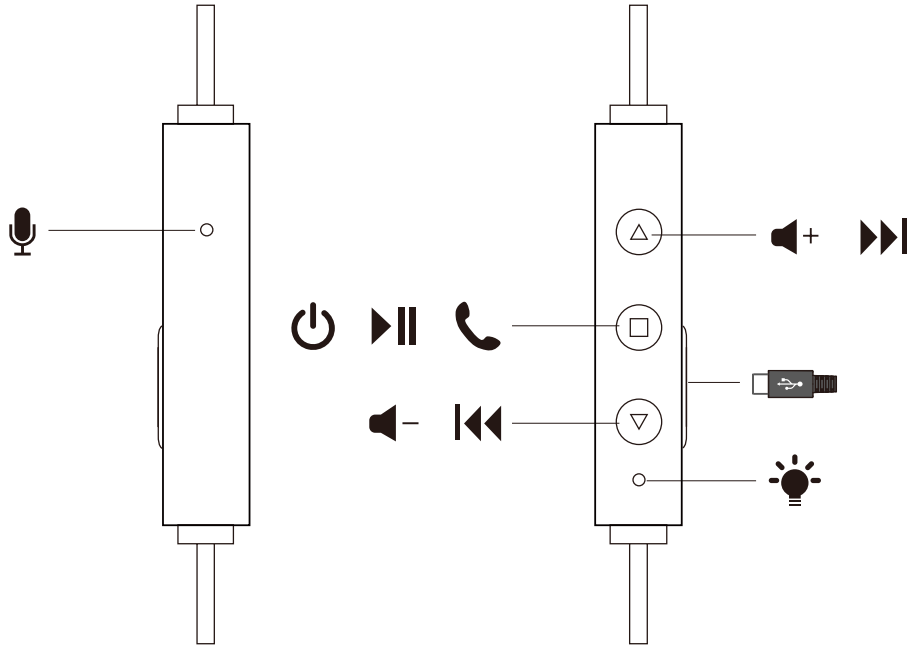
Low Latency Wireless Earbuds

AS20L



Product Overview	1
How to wear	1
Basic Operation	2
LED indicator status	2
Connect to mobile device	3
Connect with 2 mobile devices simultaneously	4
Reconnect	4
Low Latency feature	4
Charging	4
Clear pairing history / Reset	5
Troubleshooting	5

Product Overview

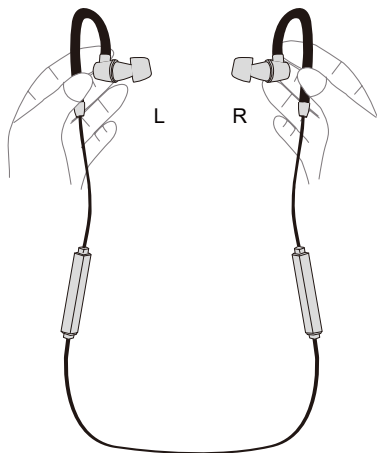


How to wear

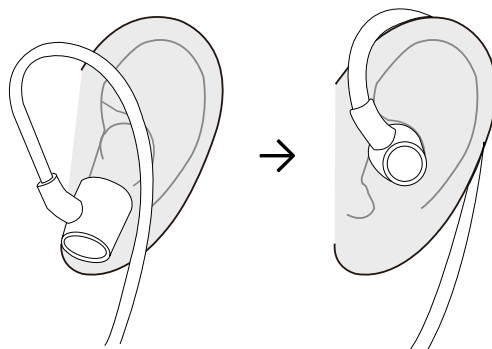
Choose a snug-fitting pair of earbud tips (size S works for most people)



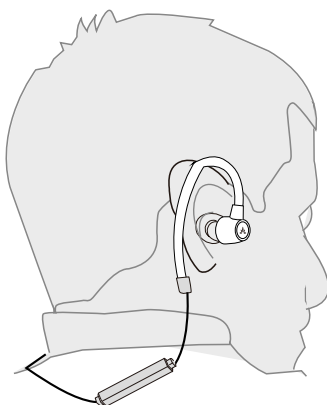
Hold like this



Insert the earbuds then hook wire behind your ears



Like this




Basic Operation

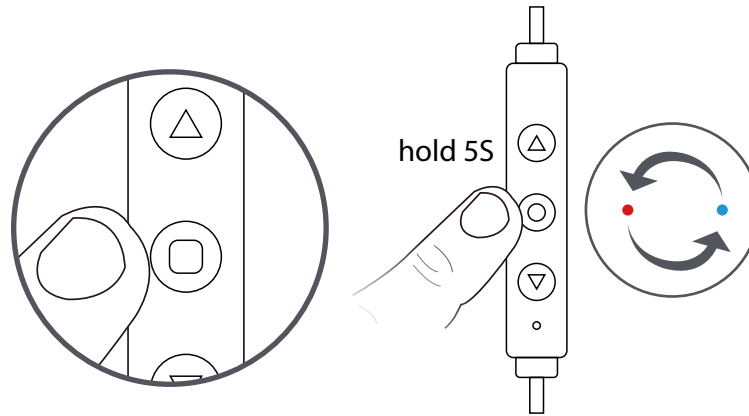
FUNCTION	OPERATION
General	
Power ON / OFF	Long press the \ominus for 2 seconds / 4 seconds. The LED light will flash PINK once.
ENTER PAIRING MODE	From off status, hold \ominus for 5 seconds until the LED flashes BLUE and RED alternately
Music control	
Play / Pause music	Press MFB once
Volume up / down	Short press \triangle / ∇
Next / Previous track	Long press \triangle / ∇
Call control	
Answer / end a call	Press \ominus once
Reject a call	Long press \ominus for 1 second
Active Voice Assistant - Siri / Google Assistant (Phone feature)	Press \triangle and ∇ simultaneously

LED indicator status

Headset Status	LED indicators
Ready to pair	Flash BLUE and RED alternately
Connected	Flash BLUE once every 5 seconds
Disconnected	Flash BLUE twice every 10 seconds
Battery low	Flash RED once every 5 seconds
Charging	Solid RED
Fully charged	RED light turns off

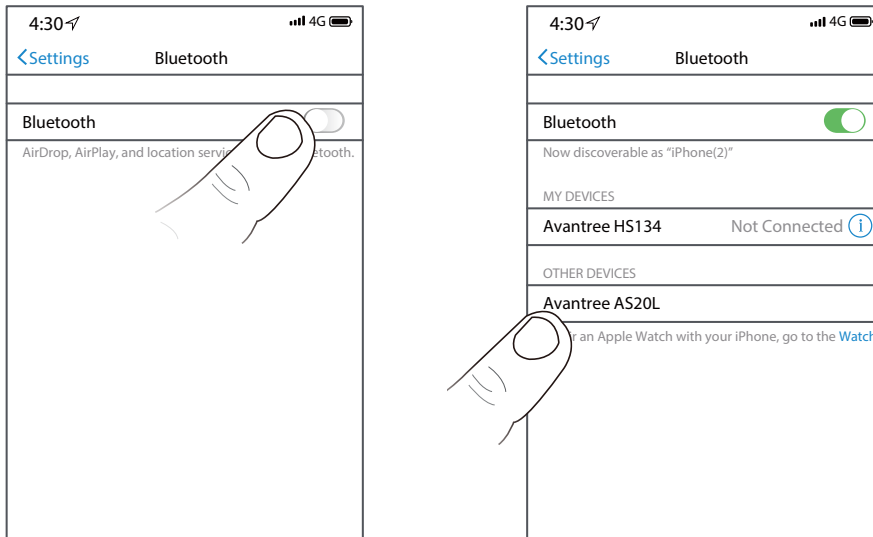
Connect to mobile device

- Set headset to **PAIRING MODE** - From off status, long press  for 5 seconds until LED flashes **BLUE** and **RED** alternately.

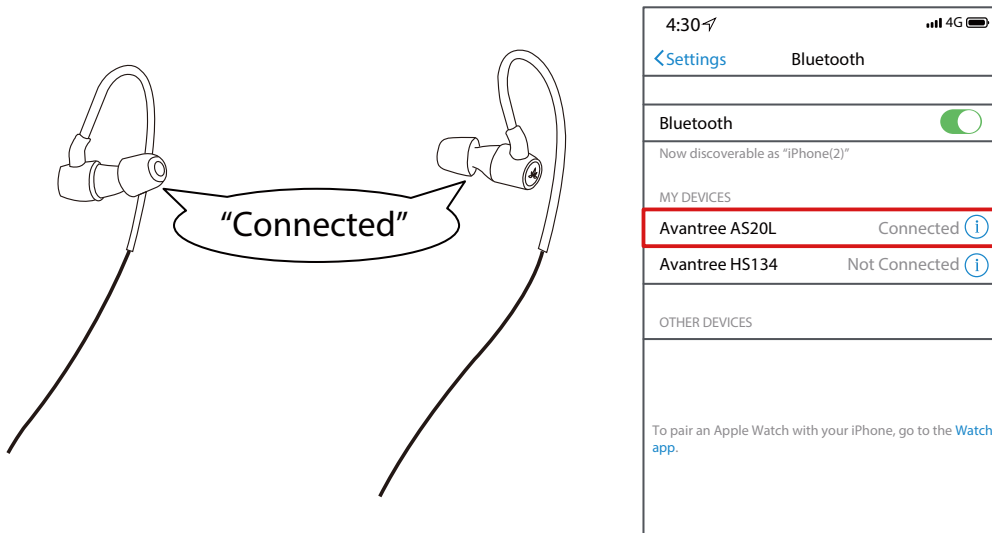


(Note: For first time use, AS20L will enter pairing mode automatically once powered on.)

- Activate Bluetooth on your device, search and select "Avantree AS20L" to connect. If you are using a Bluetooth transmitter, please set your transmitter to **PAIRING MODE** (follow its user manual.)



- Once connected, you will hear a voice prompt "Connected."

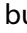


Connect with 2 mobile devices simultaneously

- Pair and connect with the first device as above.
- Turn off the Bluetooth of the first device.
- Repeat steps in “Connect to mobile device” section above to add the second device.
- With the second device connected, turn on the Bluetooth of first device and it should automatically reconnect.

Note: This only works with mobile devices such as mobile phones and tablets; this will NOT work for PCs and Bluetooth transmitters.

Reconnect

Once the headset is turned on, it should automatically reconnect to the last connected device. If it doesn't, please try clicking  button once to reconnect or try selecting “Avantree AS20L” manually on your Bluetooth device. (For Bluetooth transmitters, please refer to its user manual to reconnect.)

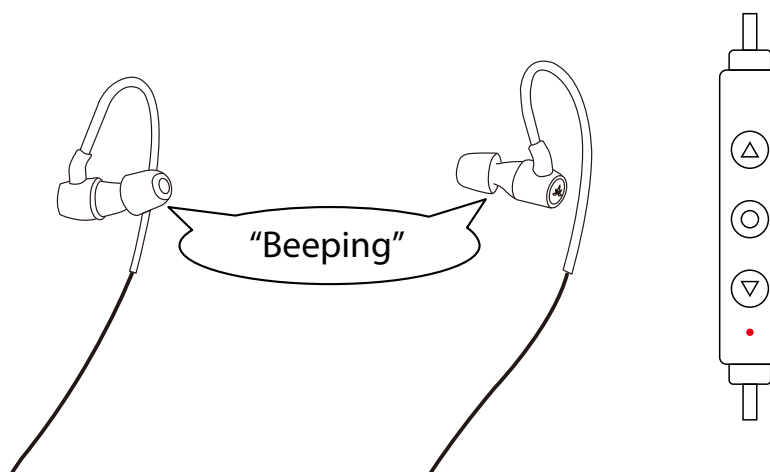
Low Latency feature

To take advantage of the AS20L's "aptX Low Latency" feature, your audio source device or transmitter must also support the aptX low latency codec. See www.aptx.com to check if your device is aptX-LL certified.

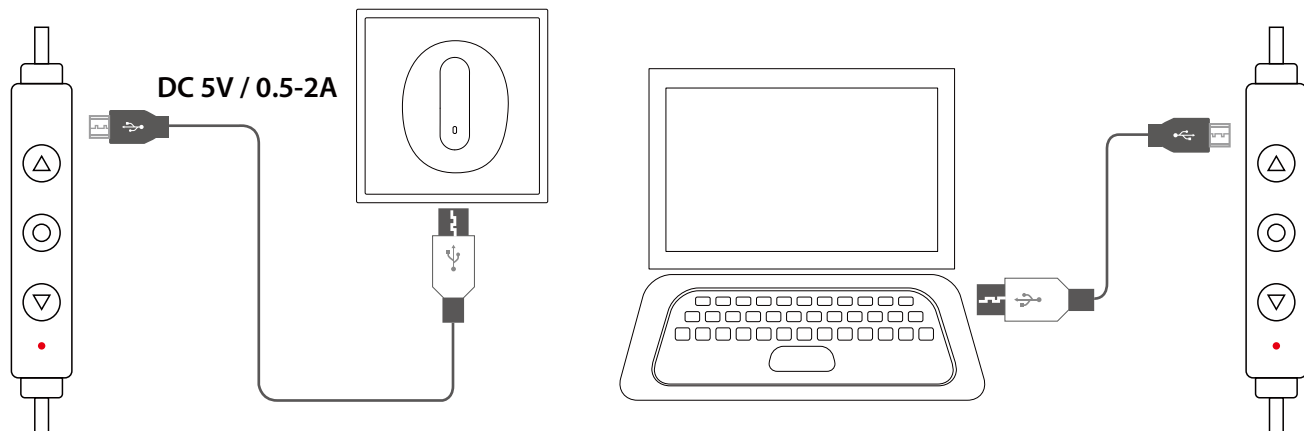
We recommend the following Avantree Bluetooth transmitters to use together with the AS20L - Audikast, Oasis, Priva III or Leaf.

Charging



A **RED** flashing LED together with a "beeping" audio reminder indicate a low battery. A full charge takes about 2 hours. The LED will remain **RED** while charging and will automatically turn off once charging is complete.

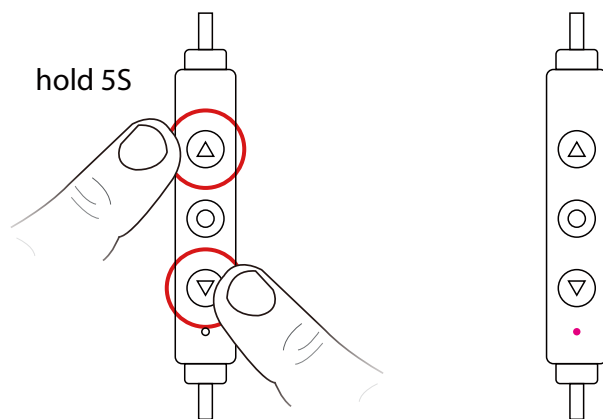


To charge, you may either plug it into a USB wall charger (DC 5V / 0.5-2A) or a computer USB port with the computer powered on.



Clear pairing history / Reset

With the AS20L powered on, long press  and  simultaneously for 5 seconds until the LED lights turns **PINK**. Once successful, the AS20L will power off. When you power it on again, it will automatically enter pairing mode.



Troubleshooting

Still experiencing delay?

The aptX Low Latency mode of Avantree AS20L ONLY works when the audio source or the transmitter also supports aptX Low Latency. Please check to make sure you are using a CERTIFIED aptX Low Latency product.

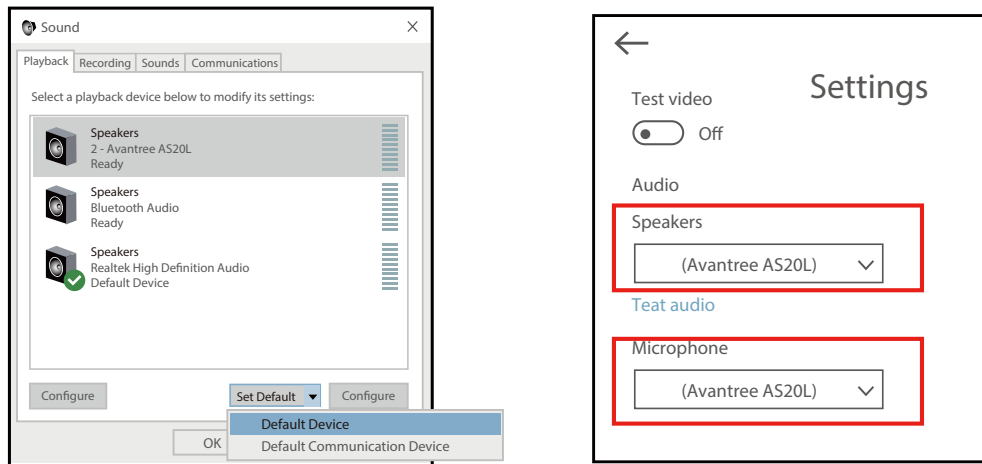
<https://www.aptx.com/aptx-low-latency>

No sound when used with a Bluetooth transmitter to watch TV?

- Make sure your Bluetooth transmitter and your headphone are connected properly.
- Check to ensure the audio source is functioning properly
 - AUX & RCA output on TV – test with wired headphones
 - OPT output on TV – Set audio format to “PCM / LPCM” or turn off Dolby / DTS
- Change your TV audio out setting to External speakers / Headset.

No sound when used with PC?

- Set Avantree AS20L as the default device or output device on the PC.
- When using AS20L to make VOIP calls through apps, please set AS20L as Microphone and Speakers device.



Headphones do not pair with Bluetooth device?

- Ensure AS20L is in Pairing mode – LED will flash BLUE and RED alternately.
- For Bluetooth transmitter, ensure the transmitter is in Pairing mode – refer to its user manual.
- For Smart phone, tablet and PC - Turn the Bluetooth off and then on again.
- Delete "Avantree AS20L headphones" from your device's Bluetooth list and then try to pair again.
- Clear the headphones pairing history and pair again
(please refer to the "Clear pairing history / Reset" section above.)

